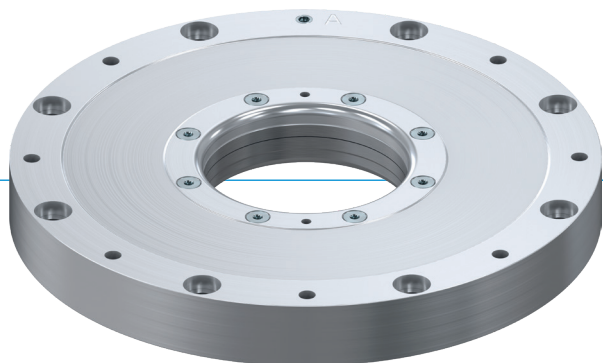


# CLAMPING ELEMENTS | PNEUMATIC

## SERIES DKPS1000

### ▶ PRODUCT ADVANTAGES



#### ▶ High holding torque without additional air

Enhanced safety due to securing the rotation axes

#### ▶ Simple status sensing

Querying the piston position with magnetic field sensor

#### ▶ Market leading cycles

Leak-free thanks to a proven piston seal

### ▶ THE BEST PRODUCT FOR YOUR APPLICATION

#### APPLICATION SCENARIOS

- ▶ Torque take-up of shafts
- ▶ Safety clamping of the torque motor
- ▶ Clamping of C-axis
- ▶ Fixing and safeguarding of swivel bridge
- ▶ Clamping of spindle tilting axis
- ▶ Clamping of the swiveling axis for portals

#### ▶ Technical data

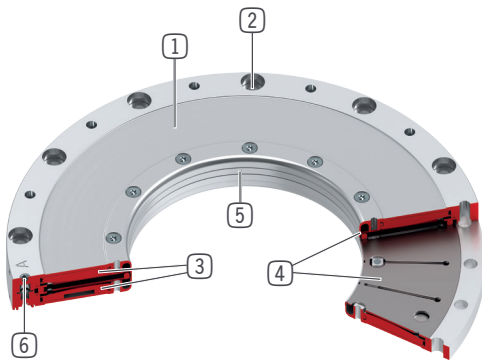
Series	DKPS1000
Shaft diameter	50-160 mm
Holding torque	80-1000 Nm
Pressure min. / max.	4.0 / 6.5 [bar]
Spring storage	existing
PLUS connection	No
B10d value	up to 3 million
Dynamic braking cycles	not suitable
Operation	pneumatic
Operating temperature	5 ... +80 [°C]

### ▶ RECOMMENDED ACCESSORIES



- ZDKPS1000-SH  
Sensor mounting kit

## ► BENEFITS IN DETAIL



- ① **Housing**
- ② **Housing connection**  
- Screw connection to the connecting construction
- ③ **Piston**  
- Special shape for optimal spring deflection
- ④ **Disk springs/spring accumulators**  
- For unpressurized holding torque generation through pre-loading
- ⑤ **Clamping area**  
- Direct clamping of the rotation axes
- ⑥ **Pneumatic connection**

## ► TECHNICAL DATA

### ► SERIES DKPS1000 PNEUMATIC CLAMPING NC (NORMALLY CLOSED) CLOSED WITHOUT PRESSURE

Order no.	Shaft Ø [mm]	Operating pressure min. [bar]	Holding torque [Nm]	B [mm]	ØD1 [mm]	ØLK1 [mm]
DKPS1050-00-A	50	5.5	120	17	145	134
DKPS1050-10-A	50	4	80	17	145	134
DKPS1060-00-A	60	5.5	175	17	155	144
DKPS1060-10-A	60	4	115	17	155	144
DKPS1070-00-A	70	5.5	220	17	165	154
DKPS1070-10-A	70	4	155	17	165	154
DKPS1080-00-A	80	5.5	290	17	175	164
DKPS1080-10-A	80	4	190	17	175	164
DKPS1090-00-A	90	5.5	350	17	185	174
DKPS1090-10-A	90	4	230	17	185	174
DKPS1100-00-A	100	5.5	370	20	228	210
DKPS1100-10-A	100	4	265	20	228	210
DKPS1120-00-A	120	5.5	530	20	248	230
DKPS1120-10-A	120	4	350	20	248	230
DKPS1160-00-A	160	5.5	1000	20	288	270
DKPS1160-10-A	160	4	660	20	288	270

