

# Robot packages

End effectors  
for Universal Robots

THE KNOW-HOW FACTORY

# UR ROBOT PACKAGES

## YOUR ENTRY INTO AUTOMATION WITH ZIMMER GROUP AND UNIVERSAL ROBOTS

### OUR EXPERTISE - YOUR ADVANTAGE

#### COLLABORATION

The cobots from Universal Robots and end effectors from Zimmer Group stand for maximum flexibility, compactness, and user-friendliness. The collaboration between both turns ambitions into concrete results.

#### STRAIGHTFORWARD USE

The wide range of end effectors from Zimmer Group as a UR+ partner paves the way for automation by enabling a variety of applications and solutions.

#### AUTOMATION SOLUTIONS

Packages for powerful automation solutions designed to balance accessibility with sophistication. With configurations that can be tailored to customers needs.



# OVERVIEW OF ALL PACKAGES

## SERIES GPP5000 AND GPD5000



### PNEUMATIC 2-JAW PARALLEL GRIPPER – SERIES GPP5000 PNEUMATIC 3-JAW CONCENTRIC GRIPPER – SERIES GPD5000

#### Steel Linear Guide –

##### The superior guidance system concept

The steel / steel guide stands for lasting precision, durability and a long service life – featuring maintenance intervals of up to 30 million gripping cycles. Benefit from these features and increase the profitability and process reliability of your machine.

#### Precise, robust, powerful and durable

These grippers provide reliable support for your application from assembly, bin picking, packaging and mounting to automatic machine loading and unloading. Reduce the range of models in your production along with associated storage and process costs.

#### Leakproof and corrosion protected –

##### The universal gripper

Suitable for virtually all ambient conditions, with a sealed guide up to IP67 and corrosion protection as standard, you are able to use this gripper universally. The IP class ensures safe operation even in dusty and wet environments.



Purged air



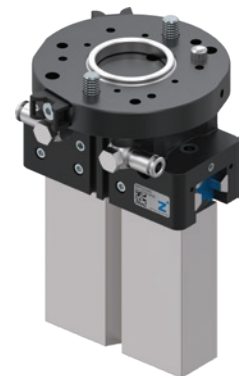
Protected  
against  
corrosion



IP64

### PNEUMATIC 2-JAW PARALLEL GRIPPER – GPP5006

▶ RSB-00-36-00001-A		
Product	Technical data	Amount
GPP5006N-00-A	Pneumatic 2-jaw-parallel gripper with 6 mm stroke per jaw	1
APR000001	UR adapter plate, ISO TK 50	1
UB5006AL	Universal jaws	2
WVM5	Pneumatic connections	2
Highlights		
Application examples	Assembly, bin picking, packaging, tending	
Recommended robot	UR3e - UR16e	
Weight [kg]	0,67	
Control	Pneumatic	
Connection	External cable routing	

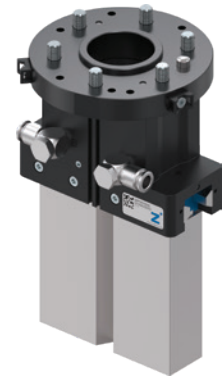


# OVERVIEW ROBOT PACKAGES

## SERIES GPP5000 AND GPD5000

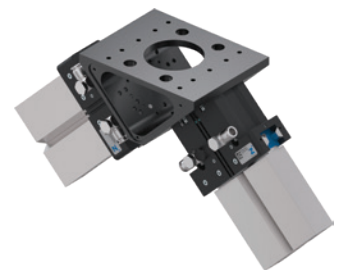
### PNEUMATIC 2-JAW PARALLEL GRIPPER FOR LARGER LOADS – GPP5010

► RSB-00-38-00001-A		
Product	Technical data	Amount
GPP5010NC-00-A	Pneumatic 2-jaw parallel gripper with 10 mm stroke per jaw	1
APR000011	UR adapter plate, ISO TK 80	1
UB5010AL	Universal jaws	2
WV1-8x8	Pneumatic connections	2
Highlights		
Application examples	Assembly, bin picking, packaging, tending	
Recommended robot	UR20 - UR30	
Weight [kg]	2,32	
Control	Pneumatic	
Connection	External cable routing	



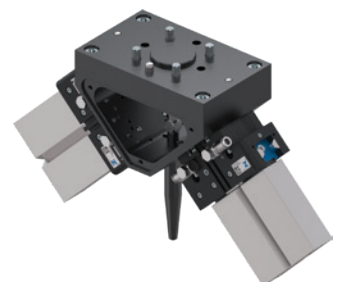
### DUAL PNEUMATIC 2-JAW PARALLEL GRIPPER FOR MACHINE TENDING – GPP5010

► RSB-00-38-00003-A		
Product	Technical data	Amount
GPP5010NC-00-A	Pneumatic 2-jaw parallel gripper with 10 mm stroke per jaw	2
APR10	ISO TK 80 on WFR04 adapter plate	1
WFR04	Angle flange	1
UB5010AL	Universal jaws	4
WV1-8x8	Pneumatic connections	4
Highlights		
Application examples	Machine tending	
Recommended robot	UR20 - UR30	
Weight [kg]	4,86	
Control	Pneumatic	
Connection	External cable routing	



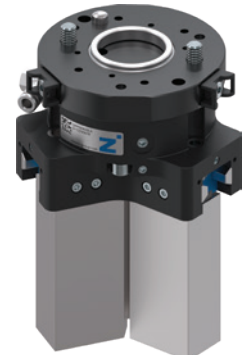
### DUAL PNEUMATIC 2-JAW PARALLEL GRIPPER FOR MACHINE TENDING – GPP5006

► RSB-00-36-00003-A		
Product	Technical data	Amount
GPP5006N-00-A	Pneumatic 2-jaw parallel gripper with 6 mm stroke per jaw	2
WFR000002	Angle flange for pneumatic 2-jaw parallel gripper GPP5006	1
UB5006AL	Universal jaws	4
DUWFR01	Outlet nozzle	1
WVM5	Pneumatic connections	4
Highlights		
Application examples	Machine tending	
Recommended robot	UR5 - UR16	
Weight [kg]	1,76	
Control	Pneumatic	
Connection	External cable routing	



## PNEUMATIC 3-JAW CONCENTRIC GRIPPER FOR LARGER LOADS – GPD5006

► RSB-00-36-00002-A		
Product	Technical data	Amount
GPD5006N-00-A	Pneumatic 3-jaw concentric gripper with 6 mm stroke per jaw	1
APR000001	UR adapter plate, ISO TK 50	1
UB5006AL	Universal jaws	3
WVM5	Pneumatic connections	2
Highlights		
Application examples	Assembly, bin picking, packaging, tending	
Recommended robot	UR3e - UR16e	
Weight [kg]	0,96	
Control	Pneumatic	
Connection	External cable routing	



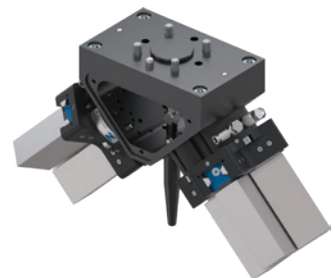
## PNEUMATIC 3-JAW CONCENTRIC GRIPPER FOR LARGER LOADS – GPD5010

► RSB-00-38-00002-A		
Product	Technical data	Amount
GPD5010NC-00-A	Pneumatic 3-jaw concentric gripper with 10 mm stroke per jaw	1
APR000011	UR adapter plate, ISO TK 80	1
UB5010AL	Universal jaws	3
WV1-8x8	Pneumatic connections	2
Highlights		
Application examples	Assembly, bin picking, packaging, tending	
Recommended robot	UR20 - UR30	
Weight [kg]	3,58	
Control	Pneumatic	
Connection	External cable routing	



## DUAL PNEUMATIC 3-JAW CONCENTRIC GRIPPER FOR MACHINE TENDING – GPD5006

► RSB-00-36-00004-A		
Product	Technical data	Amount
GPD5006N-00-A	Pneumatic 3-jaw concentric gripper with 6 mm stroke per jaw	2
WFR000002	Angle flange for pneumatic 3-jaw concentric gripper GPD5006	1
UB5006AL	Universal jaws	6
DUWFR01	Outlet nozzle	1
WVM5	Pneumatic connections	4
Highlights		
Application examples	Machine tending	
Recommended robot	UR5 - UR16	
Weight [kg]	2,35	
Control	Pneumatic	
Connection	External cable routing	



# OVERVIEW ROBOT PACKAGES

## SERIES GEP2000

### ELECTRIC 2-JAW PARALLEL GRIPPER – SERIES GEP2000

#### Largest stroke in small installation space

Do you require a large stroke, due to the fact that you are operating either a form fit gripper or a large range of parts but the installation space and the load capacity of your application is limited? Then this gripper is perfect for you!

#### The simplest activation

Activation via I/O ports like a valve. Easy to integrate into your control system.

#### Electrical operation

Ideal for small parts handling or other applications where compressed air is not available.

#### Mechanical self-locking

In the event of a power outage or emergency stop, the self-locking mechanism provides additional safety.

#### URCap compatible

The feedback of the jaw position is provided by an analog 0-10V signal that can be easily configured with URCap.



**10 million maintenance-free cycles (max.)**



**Gripping force adjustable**



**Self locking mechanism**

### ELECTRIC 2-JAW PARALLEL GRIPPER – GEP2006

▶ RSB-01-29-00001-A		
Product	Technical data	Amount
GEP2006IO-12-B-01	Electric 2-jaw parallel gripper with 6 mm stroke per jaw	1
APR000017	UR adapter plate, ISO TK 50	1
Highlights		
Application examples	Assembly, bin picking, packaging, tending	
Recommended robot	UR3e - UR16e	
Weight [kg]	0,36	
Control	Digital I/O	
Connection	Internal cable routing	



### ELECTRIC 2-JAW PARALLEL GRIPPER – GEP2010

▶ RSB-01-30-00001-A		
Product	Technical data	Amount
GEP2010IO-12-B-01	Electric 2-jaw parallel gripper with 10 mm stroke per jaw	1
APR000017	UR adapter plate, ISO TK 50	1
Highlights		
Application examples	Assembly, bin picking, packaging, tending	
Recommended robot	UR3e - UR16e	
Weight [kg]	0,48	
Control	Digital I/O	
Connection	Internal cable routing	



## ELECTRIC 2-JAW PARALLEL GRIPPER – GEP2013

▶ RSB-01-31-00001-A		
Product	Technical data	Amount
GEP2013IO-12-B-01	Electric 2-jaw parallel gripper with 13 mm stroke per jaw	1
APR000018	UR adapter plate, ISO TK 50	1
Highlights		
Application examples	Montage, Bin Picking, Packaging, Bestückung	
Recommended robot	UR10e - UR30	
Weight [kg]	0,77	
Control	Digital I/O	
Connection	Internal cable routing	



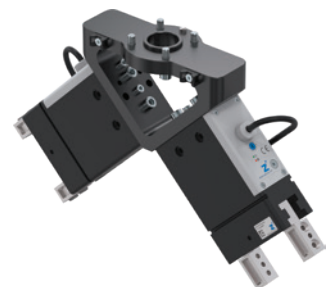
## ELECTRIC 2-JAW PARALLEL GRIPPER – GEP2016

▶ RSB-01-32-00001-A		
Product	Technical data	Amount
GEP2016IO-12-B-01	Electric 2-jaw parallel gripper with 16 mm stroke per jaw	1
APR000018	UR adapter plate, ISO TK 50	1
Highlights		
Application examples	Assembly, bin picking, packaging, tending	
Recommended robot	UR10e - UR16e	
Weight [kg]	1,16	
Control	Digital I/O	
Connection	Internal cable routing	



## DUAL ELECTRIC 2-JAW PARALLEL GRIPPER FOR MACHINE TENDING – GEP2016

▶ RSB-00-33-00001-A		
Product	Technical data	Amount
GEP2016IO-05-B	Electric 2-jaw parallel gripper with 16 mm stroke per jaw	2
WFR000005	Angle flange	1
KAG500B5	Plug-in connection with cable	2
Highlights		
Application examples	Machine tending	
Recommended robot	UR5 - UR16	
Weight [kg]	2,43	
Control	Digital I/O	
Connection	External cable routing	



# OVERVIEW ROBOT PACKAGES

## SERIES GEP5000 AND GED5000



### ELECTRIC 2-JAW PARALLEL GRIPPER – SERIES GEP5000

### ELECTRIC 3-JAW CONCENTRIC GRIPPER – SERIES GED5000

#### Comparable with pneumatic grippers

Approximately the same gripping force and connection hole patterns as a comparable pneumatic gripper.

#### The simplest activation

Activation via I/O ports like a valve. Easy to integrate into your control system.

#### Leakproof and corrosion protected

Corrosion protected and sealed up to IP64. Even in dusty and wet environments, the protection class ensures safe operation.

#### Brushless DC motor

With up to 30 million maintenance free cycles, these are grippers you can rely on in the long term.

#### Integrated ACM control module

Gripping force, travel time and switching points are configurable.

#### Mechanical self-locking

In the event of a power outage or emergency stop, the self-locking mechanism provides additional safety.



**Integrated sensing**



**Protected against corrosion**



**Self locking mechanism**

### ELECTRIC 2-JAW PARALLEL GRIPPER FOR LARGER LOADS – GEP5010

#### ► RSB-00-34-00001-A

Product	Technical data	Amount
GEP5010IO-00-A	Electric 2-jaw parallel gripper with 10 mm stroke per jaw	1
APR000011	UR adapter plate, ISO TK 80	1
UB5010AL	Universal jaws	2
KAW1000B8	Plug-in connection with cable	1

#### Highlights

Application examples	Assembly, bin picking, packaging, tending
Recommended robot	UR10e - UR30
Weight [kg]	2,76
Control	Digital I/O
Connection	External cable routing



### ELECTRIC 3-JAW CONCENTRIC GRIPPER FOR LARGER LOADS – GED5010

#### ► RSB-00-34-00002-A

Product	Technical data	Amount
GED5010IO-00-A	Electric 3-jaw concentric gripper with 10 mm stroke per jaw	1
APR000011	UR adapter plate, ISO TK 80	1
UB5010AL	Universal jaws	3
KAW1000B8	Plug-in connection with cable	1

#### Highlights

Application examples	Assembly, bin picking, packaging, tending
Recommended robot	UR20 - UR30
Weight [kg]	3,89
Control	Digital I/O
Connection	External cable routing





# OVERVIEW ROBOT PACKAGES

## SERIES GEH6000IL

### ELECTRIC 2-JAW PARALLEL GRIPPER – SERIES GEH6000IL

#### Servo drive with integrated controller

Brushless drive technology, position, speed and force control guarantee the highest amount of functionality.

#### Operational safety

The workpiece is held securely in the event of a power outage thanks to mechanical self-locking. In an emergency, this can be released manually using an Allen key.

#### MATCH End-of-arm-ecosystem

Maximum flexibility including a suitable IO-Link gripper for complex multi-handling tasks such as assembly and for applications that require high precision and force adjustment.

#### URCap compatible

All gripper movements can be conveniently programmed using the UR Teach Pendant with our URCap, including highly complex tasks.



**Integrated sensing**



**Positionable**



**Gentle**

### MATCH ADVANCED GRIPPER KIT – GEH6040IL

▶ RSB-01-40-00001-A		
Product	Technical data	Amount
LWR50L-22-00001-A	MATCH-gripper with 40 mm stroke per jaw	1
LWR50F-01-03-A	MATCH robot module RS485	1
UB6000-B-08	Universal jaws for the handling of various workpieces	2
Highlights		
Application examples	Assembly, bin picking, packaging, tending	
Recommended robot	UR3e - UR16e	
Weight [kg]	1,82	
Control	RS485	
Connection	Internal cable routing	



# NOTES

A series of horizontal dotted lines for writing notes.

The contents and data correspond to the status as of printing. Edition 11/2024.

This brochure was created with great care and all information has been checked for accuracy. However, we assume no liability for incorrect or incomplete information. Zimmer Group reserves the right to technical changes and improvements through constant ongoing development of products and services. All text, images, depictions and illustrations in this brochure are the property of Zimmer Group and protected by copyright. Any duplicating, editing, changing, translating, filming, processing or saving in electronic systems is prohibited without the consent of Zimmer Group.

## ZIMMER GROUP – THE KNOW-HOW FACTORY

OUR KNOW-HOW FACTORY WORKS WITH ALL INDUSTRIES AND DELIVERS EVERYTHING FROM A SINGLE SOURCE. OUR PRODUCT RANGE IS FAR REACHING, BOTH IN ITS DEPTH AND ITS BREADTH.

DO YOU HAVE A DEVELOPMENT PROBLEM? WE'LL SOLVE IT! SET US A CHALLENGE IN RESEARCH AND DEVELOPMENT. COUNTLESS INNOVATIONS ORIGINATE FROM OUR COMPANY. WE ARE ENTHUSIASTIC ABOUT NEW PRODUCTS AND PRIDE OURSELVES ON OUR CORPORATE PIONEERING SPIRIT.

### CONTACT – WORLDWIDE

With our current 17 global subsidiaries and partners in over 125 countries, we offer the excellent service of a technology leader. We look forward to hearing from you!

[www.zimmer-group.com/en-us/contact](http://www.zimmer-group.com/en-us/contact)



### ZIMMER GROUP SYSTEM TECHNOLOGY – THE SPECIALISTS FOR CUSTOM SOLUTIONS

With over 30 years of development experience, the system technology develops special solutions for handling and automation.

[www.zimmer-group.com/en-us/system-technology](http://www.zimmer-group.com/en-us/system-technology)



### HERE FOR YOU 24/7/365 – OUR VIRTUAL TRADE SHOW BOOTH

With impressive features such as an animated camera flight, clickable information hotspots and 3D models that can be rotated, we guarantee that you will be thrilled—virtually.

[www.zimmer-group.com/en-us/expo](http://www.zimmer-group.com/en-us/expo)



### OUR NEW PRODUCTS

Zimmer Group is renowned as an innovator and for its pioneering spirit. Accordingly, each year we can offer new innovative and individual solutions. For current product highlights, refer to:

[www.zimmer-group.com/en-us/innovations](http://www.zimmer-group.com/en-us/innovations)



#### HEADQUARTERS:

#### ZIMMER GROUP

Am Glockenloch 2  
DE 77866 Rheinau  
T +49 7844 9139-0  
F +49 7844 9139-1199  
info.de@zimmer-group.com  
[www.zimmer-group.com](http://www.zimmer-group.com)